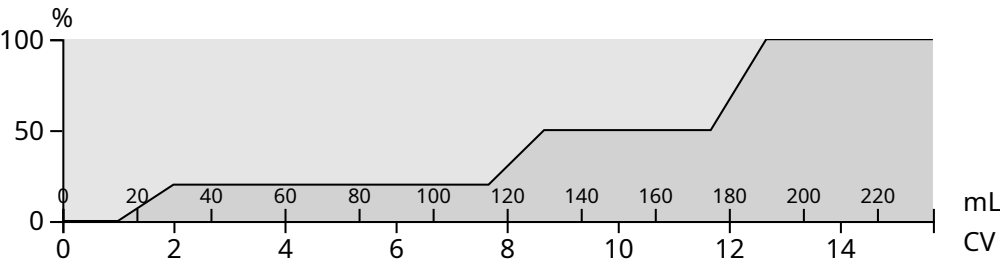
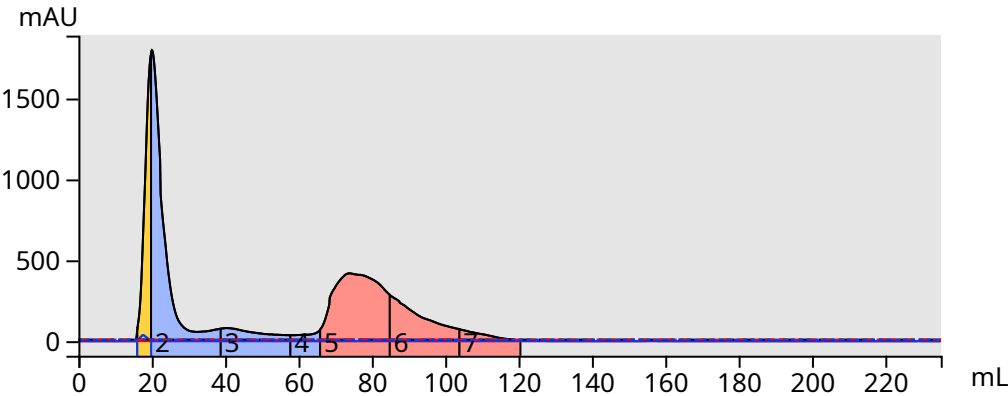


HI-2-38



Signal	Wavelength	Threshold
● λ-All (Collect)	200 - 400 nm	10 mAU
● UV1 (Collect)	200 nm	10 mAU
● UV2 (Collect)	400 nm	10 mAU

Gradient

**Solvent A:** n-Hexane

**Solvent B:** Ethyl acetate

0-0%	Ethyl acetate in n-Hexane	1 CV	
0-20%	Ethyl acetate in n-Hexane	1 CV	
20-20%	Ethyl acetate in n-Hexane	3 CV	
20-20%	Ethyl acetate in n-Hexane	2.7 CV	Isocratic hold
20-20%	Ethyl acetate in n-Hexane	0 CV	
20-50%	Ethyl acetate in n-Hexane	1 CV	
50-50%	Ethyl acetate in n-Hexane	3 CV	

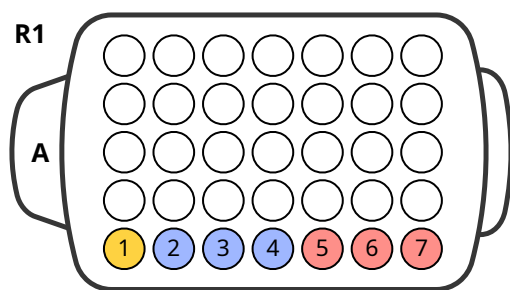
50-100%	Ethyl acetate in n-Hexane	1 CV
100-100%	Ethyl acetate in n-Hexane	3 CV

## Run Parameters

**Column Type:** Biotage® Sfär HC 10g  
**Flow Rate:** 40 mL/min  
**Equilibration:** On  
**Collect All:** Off  
**Channel:** 1

**Sample Mass:** 100  
**Max Fraction Volume:** 19 mL  
**UV Baseline Correction:** On

## Racks



**Rack Type:** 16 x 150 mm, 19 mL  
**Rack ID:** 16142028410798925148

## System Information

**Software:** SELEKT 1.3.2-11737  
**Instrument ID:** AAA-BCJ-INN-EPH

## Log

Message	Run Phase	Volume	Time
Run started by user.	Not Started	0 mL	14:14:22
Isocratic hold false -> true.	Gradient	75 mL	14:21:51
Isocratic hold true -> false.	Gradient	115 mL	14:22:53
Gradient changed.	Gradient	115 mL	14:22:53
Run finished.	Finished	235 mL	14:27:00